

HERS Energy Rating

Before you break ground an energy analysis (HERS Rating) of the building performance is a best practice for quality assurance and is required for **Energy Star** homes and towns with **Stretch Energy Code**. As a certified HERS Rater, Cozy Home can provide expert guidance with building envelope designs to meet project budget, performance standards and achieve code. Our extensive experience as a building performance contractor allows us to identify potential problem areas and provide solutions that can help prevent costly errors. Begin with an **Energy Smart Plan** before construction and build your client's a comfortable, healthy and energy efficient home for life.

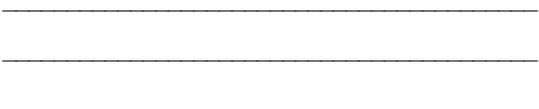
About

Since 2006 Cozy Home Performance, LLC has been providing comprehensive home performance assessments, building diagnostics and building envelope retrofit services for residential, commercial, and institutional buildings. Our methods are based on an integrated systems approach that follow the established principals of building science and energy performance standards. We believe that an integrated, whole-building, approach is required to prevent and solve occupant comfort, health and safety compromises and building durability issues while reducing energy costs. Our services will increase your quality of living guaranteed.



Health . Comfort . Savings

180 Pleasant St,
Easthampton, MA 01027



2012 IECC

Building Envelope Solutions

Pass 2012 IECC &
Stretch Energy Codes.

The first time.
Guaranteed.

Design, Install & Testing of
Code Compliant & High
Performance Building Enclosures.

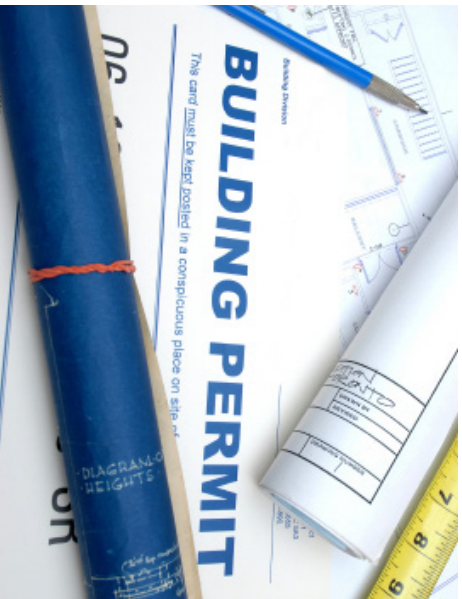


Health . Comfort . Savings

Residential. Commercial. Institutional

(413) 529-0200

Info@mycozyhome.com



Successfully pass the 2012 IECC building energy codes. **GUARANTEED.**

The new energy code requirements are rigorous and require careful construction practices in order to be code compliant. Some of the most stringent specs are the building envelope insulation and air barrier controls ([see table](#)).

With emphasis on the building envelope controls the project requires an experienced and proven building envelope specialist. You will need to work with a contractor who will install a complete, air-tight thermal boundary that passes mandatory diagnostic testing and inspection.

Mandatory Diagnostic Testing and Inspection: (Mid-Point and Post)

- Blower door air leakage testing (ACH50)
- Duct leakage testing
- Thermal Bypass Inspection (TBI)

Stay on track with project timelines and costs and pass code the first and only time. Guaranteed. Cozy Home installations will surpass the standards of the advanced energy codes. We utilize a variety of techniques that will provide a more healthy, comfortable and efficient home.

IECC Modifications	Air Changes Per Hour (ACH50) Air Leakage	Duct Leakage cfm/100 sqft	Attic Insulation	Windows	Basement Insulation	Chute Vent
2009	7 ACH50	12 CFM	R-38	U35	R10	Rigid, Air-tight Baffle
2012	3 ACH50	4 CFM	R-49	U32	R-15	

Verification testing and inspection of building envelope air and insulation barriers must be completed by approved 3rd party. Required for new construction, Energy Star homes and Stretch Energy Code towns.

New Construction and Retrofit Contracting Services

Insulation Install: High Performance R-value

- Cellulose: cavity dense pack and blown loose fill
- Polyurethane spray foam: closed cell and coatings
- Rigid board: polyiso foil face, mineral wool
- Hybrid assembly: mixed cavity fill, thermal breaks
- 15-minute intumescent fire coatings



Air Barrier Install: Superior Air-tight Envelope

- Complete envelope air sealing
- Thermal Bypass Inspection (TBI)
- Air-tight chute vent baffling
- Targeted air sealing; post inspection repairs

Diagnostic Testing and Code Verification: Test It and Pass It.

- Blower door air leakage testing: ACH50
- Thermal by-pass inspections (TBI)
- Duct leakage testing (4 CFM per 100 sqft CFA)
- Mid-point and post quality control testing



Performance Testing: Project Quality Control

- Blower door envelope air-tightness testing
- Smoke fogging and air barrier inspection
- Infrared scanning of enclosed cavities
- Duct air-tightness testing of forced air systems and flow rate balancing
- Zonal pressure diagnostics (e.g. verify garage separation from living space.)
- Combustion safety (e.g. building depressurization and backdrafting.)
- HERS energy ratings

Building Envelope Solutions: Right and Tight, First Time. Guaranteed.